

APPENDIX-2 CAR OPERATING PANEL INSTALLATION

ALYA SERIES

SERIAL CAR OPERATING PANEL

INSTALLATION AND USERS MANUAL



7 Segment and Dot Matrix Led Displays



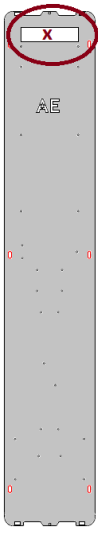
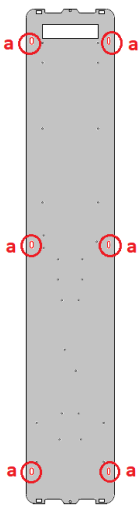
Document Version : v1.0

ALYA Software Version : 1.3



AYBEY
ELEKTRONİK
www.aybey.com

1. Installation

	<p>1.Take the upper cover of the car operating panel (COP) upwards out via a hard object like screwdriver..</p> <p>Take the lower cover of the COP downwards out via a hard object like screwdriver.</p>		<p>2.Take the front steel cover by pulling out.</p>
	<p>3.Place the back panel of COP onto the cabin wall and determine the position of the cable passage hole as indicated by x in the drawing.</p> <p>Open a rectangular hole in the cabin wall as 30 x120 cm.</p>		<p>4.After that the cable hole has been opened in the cabin wall place the back panel once more onto the wall and screw six 4.8x16 drill head screws given with the product through the red marked holes to fix the back panel onto the cabin wall.</p>

5.The only electric connection to the COP is **CON-A** cable.

Insert one terminal of the **Con-A** cable to the **Con-A** socket of in inspection box, on PWL board.



6.If there are two car doors and two COPs then...

First, carry on all steps from **1 to 4** for the **second COP** in the cabin to fix it onto the cabin wall.

Insert one terminal of the second **Con-A** cable (**Con-A**) to the **Con-B** socket of in inspection box, on PWL board.

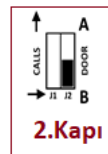
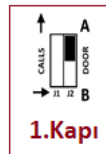
Pass the other terminal of Con-A cable through the hole indicated as **x in 3** and insert it to the **Con-A** socket in COP.

The car doors must be defined as **A and B** for two side operation in related menu in lift controller.

in both COPs to differentiate the COPs for car sides A and B.

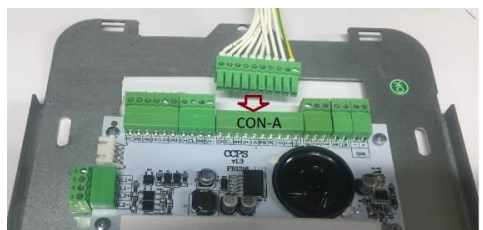


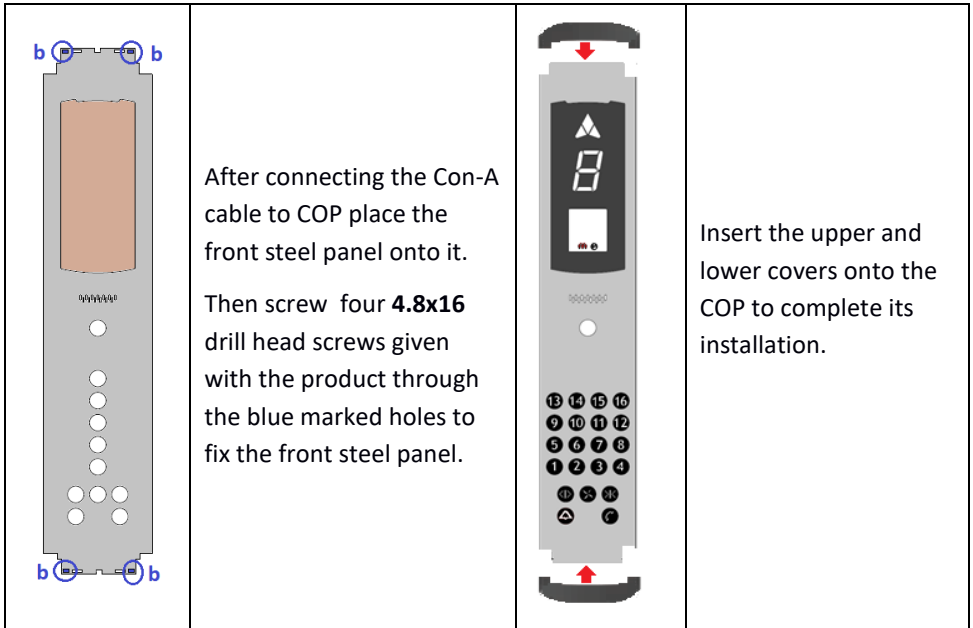
J2 must be always in A when only one door is used.



Check J2 switches when there are two COPs in one cabin.

7.Pass the other terminal of **Con-A** cable through the hole indicated as **x in figure 3** and insert it to the **Con-A** socket in COP.





2-Using the Product

- Prevent the product from dust, humidity, excessive heat and impact in storing, installing and using phases.
- COP is working with serial communication. Therefore, the **lift controller to which it will be connected must be functioning with the same protocol that COP has.**
- Use only special stainless steel cleaners to clean the COP. Other chemical cleaners may damage the surface of the steel.
- Protect the COP from any water drops or direct contact with other liquids.
- Always, switch off the power before opening the front cover of the COP.