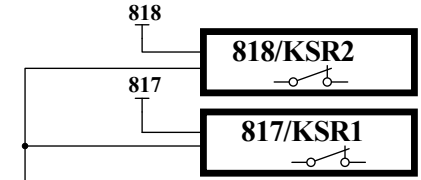
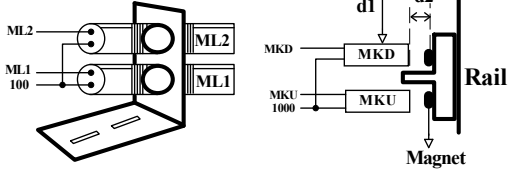


d1 : The distance between two magnets in case there is not rail between them.  
 d2 : The distance between magnet and magnetic shalter.

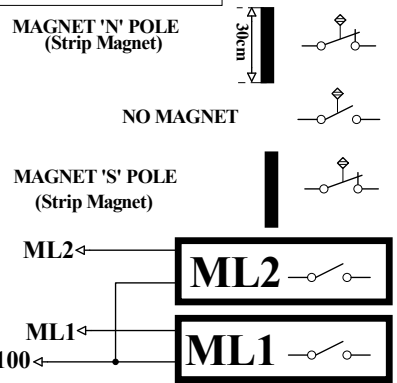
d1 = min.100mm  
 d2 = 6-15 mm



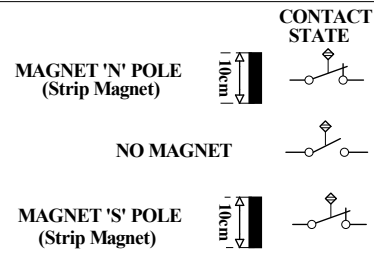
USE MECHANICAL SWITCHES AS 817 (KSR1) AND 818(KSR2) LIMIT SWITCHES

**AYBEY KPM 206 MONO STABLE MAGNET SWITCH**

Place strip magnet in front of ML1 and ML2 switches.



ML1 and ML2 Floor level sensors that detect the unlocking zone must comply with EN81-1 and EN81-2 article 14.1.2.5



ML1, ML2, MKU AND MKD ARE PLACED ON CARTOP FOR HIGHER NUMBER OF STOPS THE MAP REPEATS ITSELF.

SAFE ZONE LIMIT SENSOR FOR OPEN DOOR LEVELLING AND RELEVELLING.

This document is a sample for applications. All information contained in these materials are subject to change by Aybey Elektronik without notice. Aybey Elektronik assumes no responsibility for any damage, liability, or other loss rising from these inaccuracies or errors.

F/7.5.5.02.67

AC SERIES COUNTER SYSTEM MAGNET LOCATION MAP WITH MONO-STABLE SWITCHES			
AYBEY ELEKTRONIK	SERIES AC	DRW. M. AKKUŞ	
	PROJ. AC180	APPRV. M. AYBEY	
	REV. 00	DATE 20 JUN 12	